



braybenefitauktion, bashandexhibitionsrecap

It was an exciting summer at the Bray! The grounds were overflowing with visitors and great artwork, including a camera obscura that was installed temporarily in the beehive kiln.

braybenefitauktion andresidentexhibition

The Bray Benefit Auction and Resident Artist Exhibition came to an end with a splash at the Brickyard Bash. Not only do the residents donate work to the auction, but with this year's theme of the Brickyard Splash many of them dressed as pirates, sea horses, polar bears and even a penguin. They decorated and entertained, which gave the entire evening a special "Bray quality."

The Warehouse Gallery was full of excellent ceramic art from our 10 long-term and 11 summer residents, along with pieces from our Live, Silent and Cup auctions. For the first time this year we added an Online Auction component. Bidders had the ability to bid on work from over 130 artists from around the world. The Live Auction featured work by Linda Arbuckle, Adrian Arleo, John Balistreri, Josh DeWeese, Julia Galloway, John Gill, Sarah Jaeger, Jun Kaneko, Steven Young Lee, David Regan, Don Reitz, Chris Staley, Richard Swanson, Akio Takamori, Patti Warashina and Kurt Weiser.

We would like to thank Mike Casey, Mary Lee Larison and Dan Anderson for their expertise with the Live Auction and all the participating artists, staff and volunteers for their help and support during the events. All of you



Bray Benefit Live Auction and Brickyard Bash, 2009

made the 13th annual Bray Benefit Auction a great success! Mark your calendar for next year's Benefit Auction and Brickyard Bash, July 24th, 2010.



Mary Lee Larison and Irish Flynn, Bray Benefit Cup Auction, 2009

2008–2009fellowship andfarewellexhibitions

In August our Fellowship and Farewell exhibitions were equally amazing, filling both the Warehouse and North Gallery with installations, pottery and sculptures. The Fellowship artists for 2008–2009 were David Peters, Donna Flanery, Nathan Craven, Birdie Boone and Kevin Snipes. This annual exhibition gives Fellowship recipients an opportunity to



Donna Flanery, 2008–2009 Lillian Fellowship Exhibition

share the body of work developed during their Fellowship year at the Bray. This year's farewell artists were Anne Drew Potter, Renee Audette, Jeremy Hatch and Brian Rochefort. Both of these exhibitions provided a chance to see the work of residents who have spent time at the Bray developing their artwork and becoming a part of the Helena community. We wish all of you the best.

continued on page 3

workshopsat thebray2010



Jason Walker, *Stopping to smell the flowers, in my concrete shoes, I offered a crust of bread to John Muir, 2009*

Kevin Snipes
March 13–14

Tyler Lotz, George Hrycun & Jason Walker
Tightening Lines:
From the Studio to the River
May 24–27

Andrew Martin & Mark Pharis
From Flat to Fat:
Function, Context and Process
June 7–18

Jeff Oestreich
The Wheel Update
July 8–11

Bruce Cochrane
Lidded Form and Surface Techniques
August 12–15

Gerrit Grimm & Chris Antemann
Porcelain, Myth and the Figurine
September 23–26

Bernadette Curran
The Danger in Playing with Animals
October 15–17

Registration begins January 13, 2010.
For more information go to our Web site at
www.archiebray.org
Sorry no early registration.

e-mailupdates

Don't miss another event, workshop or class by staying in touch with what is happening at the Bray. Sign up today to receive e-mail updates and online news.

Go to www.archiebray.org or
e-mail contact@archiebray.org.

director's message



Steven Young Lee with the Korean Ceramics Biennial mascot Toya, Icheon, Korea

One of my favorite aspects of the Bray is getting to know the many talented artists that come through the studio doors. The downside is that it is never easy to say goodbye as the residents move on to new opportunities. This year we've had a lot of transition in the studios. Along with our summer residents, six of our long-term residents, Renee Audette, Donna Flanery, Jeremy Hatch, David Peters, Anne Drew Potter and Brian Rochefort finished their time here. While we are excited to welcome a new group of artists to the Bray, we will miss our old friends and wish them the best of luck on their new adventures.

In the summer newsletter I wrote about my experience at the International Ceramics Symposium, Ceramics & Ecology, in Icheon, Korea. It was a wonderful time to connect with members of the global ceramics community and share the progress that the Bray has made to reduce our environmental impact. Last year we were able to reduce the overall utility cost at the Bray by about 8% by properly analyzing our energy usage and making initial adjustments that we could afford. It is amazing how much of an impact we have made by installing motion lights, a few energy efficient heaters and simply reminding people to conserve energy. Every little bit helps.

In addition to conserving energy, we also want to conserve materials. Included in this newsletter is a postcard for you to return, letting us know your preference in receiving electronic or paper mailings. While we are conscious of the volume of our printed materials, we also want to make sure we are effectively communicating with all of you. Please take a moment to let us know how to best keep in touch with you.

With the help of each of you the Bray has remained true to its mission since 1951 even

as the field of ceramics continues to evolve. In 2011 we plan to pull out the stops for our 60th anniversary celebration, "From the Center to the Edge: Celebrating 60 years of Creativity and Innovation in the Ceramic Arts." The event will honor the achievements of the Bray while focusing on new creative developments and social concerns within the field. This is a gathering you won't want to miss so mark your calendars and stay tuned for more information!

While I want to thank the staff and board for their hard work and dedication over the past year, we owe our success to the strength of our generous community. Thank you all for your friendship and support.

—Steven Young Lee

2009 meloy stevenson award



The Meloy Stevenson Award of Distinction acknowledges outstanding service to the Archie Bray Foundation and is granted to individuals whose commitment has helped to sustain the Bray as "a fine place to work." Resident Artist Director Steven Young Lee presented the 2009 award to **Sarah Jaeger** (pictured) and the late **Raymond Dockstader** at the Bray annual auction in July. The ceramic plaques were made by Kevin Snipes and frames by Al Swanson.

president's message

As 2009 comes to an end, it is wonderful to look back at all that has been accomplished and I want to thank the people who have contributed to the Bray's progress.

There has been much transition this year with a large turnover of residents in 2009. I encourage everyone to attend the upcoming exhibitions and have an opportunity to meet and see the works of the new resident artists.

I would like to let everyone know of a change that has taken place on the Archie Bray Foundation Board of Directors. Due to other commitments, Mae Nan Ellingson has left the Board. We are fortunate that Lin Deola, who finished her board term last year, was willing to come back and serve out the remainder of the vacant term. On behalf of all the Bray community, I would like to thank Lin for rejoining the Board and wish Mae Nan the best.

The workshops at the Bray were exciting and well attended in 2009. We want to thank the workshop instructors and the participants for such a memorable summer. I hope all of you will start making your plans to attend the upcoming 2010 workshops.

Planning is well under way for the upcoming 60th anniversary of the Bray in June 2011. You will be hearing much more about this event in the future as the committee finalizes the planning. Please save space on your calendars (*June 23–25, 2011*).

The Board would again like to thank Steve and the staff for their hard work and excellent leadership of the Bray. Steve's third year was a very busy one, and we look forward to 2010.

I cannot end this letter without my annual pitch on behalf of the Friends of the Bray (FOB). We all recognize that the economy is not doing well, but I hope you will consider either joining or continuing your membership in FOB. Your financial support is critically important in helping us attract talented artists to our residency program. Thank you for your continuing support.

—Richard Baiter

archiebrayfoundation

The Archie Bray Foundation was founded in 1951 by Archie Bray, Peter Meloy, and Branson Stevenson "to make available for all who are seriously and sincerely interested in any of the branches of the ceramic arts, a fine place to work."

Staff

Steven Young Lee, Resident Artist Director
Teresa Amsbaugh, Development Officer
Chuck Aydtlett, Clay Business Manager
Chip Clawson, Maintenance Manager
Marcia Eidel, Development Director
Emily Free Wilson, Gallery Director
Tad Henningson, Clay Business Production Manager
Rachel Hicks, Director of Programs and Administration
Noreen Lehfelt, Accounts and Office Manager
Peter Rudd, Clay Business Assistant
Joshua Rysted, Clay Business Retail Manager

Board of Directors

Richard Baiter, President
Norma Tirrell, Vice President
Margaret Woo, Treasurer
Jess Parker, Secretary
Dan Anderson
John Balistreri
Wally Bivins
Toni Broadbent
Sally Brogden
Mike Casey
Lin Deola
John Green
Ayumi Horie
Beth Lo
Alan Nicholson
Susan Ricklefs
Jon Satre
Ann Shaner
Bobby Silverman
Rebecca Sive

Former Resident Directors

Rudy Autio
Lilian Boschen
Gene Bunker
Dave Cornell
Josh DeWeese
Ken Ferguson
Carol Roorbach
David Shaner
Peter Voukos
Kurt Weiser

The Archie Bray Foundation is a 501(c) 3 corporation. Contributions are tax deductible. Tax ID#81-0284022. For information about membership, the resident artist program, community ceramics classes, or any aspect of the Bray's operations, call or write:

Archie Bray Foundation
2915 Country Club Avenue
Helena, Montana 59602-9929
406/443-3502 fax: 406/443-0934
e-mail: archiebray@archiebray.org
web site: www.archiebray.org

summerbenefitauction, bashandexhibitionsrecap

continued from page 1

recentacquisitionsto thepermanentcollection

As we said goodbye to many of the resident artists at the end of the summer, the North Gallery's current exhibition, Recent Acquisitions to the Permanent Collection, lets us enjoy their donation to the Archie Bray Foundation's permanent collection. The exhibition features work by recent resident artists Renee Audette, Daniel Bare, Nicolas Darcourt, Donna Flanery, Alessandro Gallo, Seth Green, Jeremy Hatch, Suzanne Kane, Debbie Kupinsky, Peter Morgan, David Peters, Brian Rochefort, Cheri Thornton and Valerie Zimany. Also included are two platters by Masaya Imanishi, donated by collectors Robert and Suzanne Taunt, and pieces by Kurt Weiser and Akio Takamori, given by the late Raymond Dockstader.

kolvasullivanexhibition spokanewashington

For ten years now Jim Kolva and Pat Sullivan have been hosts to an exhibition of Bray residents at the Kolva-Sullivan Gallery in Spokane, Washington. Artwork by new and recent residents was on display for the month of October. (To view images of the exhibition visit www.archiebray.org.) On the same weekend the exhibition opened, Martha Grover and Cheri Thornton gave a free workshop organized by Eastern Washington University Department of Art and the Spokane Falls Community College Ceramics Program. We want to thank Jim Kolva, Pat Sullivan, Mardis Nenno and Lisa Nappa for all their help and support in making this exciting opportunity available for ceramic enthusiasts in Spokane.



Richard Baiter, Board President
Kolva-Sullivan Exhibition opening, 2009

2010upcomingexhibitions

Beyond the Brickyard

2nd annual juried exhibition

January 30–March 13, 2010

Opening reception: January 30, 6–8 pm

Community Class Exhibition

May 13–May 22, 2010

Opening reception: May 13, 6–8 pm

2010 Visiting Artists Exhibition

May 27–August 1, 2010

Opening reception: May 27, 6–8 pm

Resident Artist Exhibition & Bray Benefit Auction

June 10–July 24, 2010

Opening reception: June 10, 6–8 pm

Bray Benefit Live Auction & Brickyard Bash

Saturday, July 24, 2010

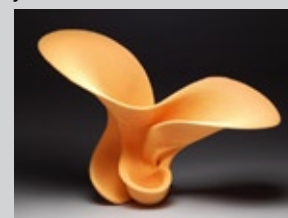
Fellowship and Farewell Exhibitions

August 5–TBA

Opening reception: August 5, 6–8 pm



The second annual Beyond the Brickyard juried exhibition received over 250 entries.



Casey Hochhalter, *2 Simulation*

Juror Wayne Higby, Archie Bray 2009 Voukos Fellow, selected 35 pieces, which will be on display in the

North Gallery January 30–March 14, 2010. Awards will be announced during the opening reception, Saturday, January 30th. Please join us at the Bray for this exciting exhibition or view artwork online beginning in January at www.archiebray.org. Thank you, Wayne Higby, for sharing your time and experience with the Bray, and to all who entered and supported the Bray in order to make this exciting exhibition possible.



2009–2010 fellowship awards

Selected from a highly competitive field of candidates, the 2009–2010 Archie Bray Fellowship recipients will begin their residencies this fall. September brought the arrival of Matsutani Fellow **Kelly Garrett Rathbone**, Taunt Fellow **Martha Grover** and Lilian Fellow **Sean Erwin**. The Lincoln Fellowship was awarded to **Gwendolyn Yoppolo**, a current resident, and MJD Fellow **Kensuke Yamada** will begin his fellowship residency in December.

kellygarrettrathbone matsutanifellow

Kelly Garret Rathbone was born in Singapore to American parents. She grew up living all over the world, but calls Texas her home. She has studied at Parsons School of Design in New York, the School of the Art Institute of Chicago, Penland School of Crafts in North Carolina and the Florence Academy of Art in Italy.



Kelly Garrett Rathbone,
The Journey's Weight (detail)

Rathbone was the 2008 Howard Kottler Scholarship recipient for a winter residency at Watershed Center for the Ceramic Arts in Maine, and, most recently, is the 2009–2010 Archie Bray Matsutani Fellow.

Her figurative sculpture bridges processes in both ceramics and glass and are surreal documentations of her life, thoughts and feelings, which make up Rathbone's personal "cabinet of curiosities."

marthagrover tauntfellow

Martha Grover received her MFA from the University of Massachusetts Dartmouth and has spent time as an artist in residence at Red Lodge Clay Center in Red Lodge, Montana, and the Northern Clay Center in Minneapolis, Minnesota. She was the 2008 recipient of the Bill and Stirling Sage Summer



Martha Grover, *Cream and Sugar set in Tray*

Scholarship at the Archie Bray Foundation, and, most recently has been awarded the Taunt Fellowship for 2009–2010.

Her thrown and altered porcelain forms emulate orchids, flowing dresses and the body. The work has a sense of both familiarity and preciousness.

seanerwin lilianfellow

Sean Erwin received his MFA in 2008 from the University of South Florida and his BFA in studio art in 2004 from Stetson University, DeLand, Florida. His most recent exhibitions include the 2009 NCECA Biennial and a solo exhibition at the Atlantic Center for the Arts, Harris House Gallery in New Smyrna Beach, Florida.



Sean Erwin, *The Passage*

Erwin's sculptural work challenges the viewer to explore their imagination while at the same time presents an awkward familiarity through the possibility of shared experiences.

gwendolynyoppolo lincolnfellow

Gwendolyn Yoppolo received her MFA from Penn State University in 2006. Since that time she has served as an assistant professor of art at Juniata College in Huntingdon, Pennsylvania, and also as a studio technician at Alfred University. She was the 2008 Archie Bray Myhre Scholar and, most recently, the 2009–2010 Lincoln Fellow.



Gwendolyn Yoppolo, *Ice Cream Set*

While at Penn State she received two fellowship awards for her research using a scanning electron microscope and continues to work with this instrument to photograph

the tiny landscapes of beach rubble, sugar cereals, plant seeds and insect parts. This photography work is visually stimulating and opens up thoughts about the scale of human life. These thoughts infuse her imagination as she creates her functional porcelain ceramics.

kensukeyamada mjd fellow

Kensuke Yamada was born in Kamakura, Kanagawa, Japan, and is currently working on his MFA at the University of Montana. He received his BA at The Evergreen State College in Washington. Yamada's work has been exhibited around the Northwest and he will be joining the Bray in December.

Yamada's figurative ceramic sculptures include children and animals dressed in polka-dot and striped clothes with rough textures and oversized heads. He seeks to create a relationship between viewers and his artwork by challenging himself to make work that portrays multiple emotions that constantly interact with viewers.



Kensuke Yamada, *Zo Rider*

Each fellowship awards \$5,000 and a one-year residency at the Archie Bray Foundation to artists of exceptional accomplishment and promise. Beneficiaries are expected to embrace the Bray experience of community and exchange, and have the opportunity to focus their attention toward producing and exhibiting a significant body of work.

2010 applications online

Applications and guidelines for the 2010 Fellowships and Residencies are now available online. To apply go to, www.archiebray.org, and click on Artists Residencies.

The Bray will not be accepting mail-in applications in 2010. For questions please call 406/443-3502 ext. 13.

All applications for the 2009 Fellowships and Residencies are due to the Archie Bray by March 1, 2010.

2009 new long-term residents

Joining us this year are three new long-term residents to the Bray. We are happy to welcome **Aaron Benson**, **Steven Roberts** and **Courtney Murphy**.

Aaron Benson received his BFA in Ceramics from the University of Tennessee, Knoxville and has spent the last few summers as an intern at Anderson Ranch in Colorado. Benson uses a combination of clay, metal, wood, plastic and Styrofoam to create works that mimic architectural forms.



Aaron Benson, *Untitled*

Courtney Murphy studied ceramics at Oregon College of Art & Craft in Portland, Oregon. After graduating, she spent time at a ceramic residency in Denmark and in 2006 she began a two year ceramic residency at Odyssey Center for the Ceramic Artists in Asheville, North Carolina. Her functional ceramics are influenced by simplified abstractions of nature, children's artwork, folk art, and mid-century modern forms and shapes.



Courtney Murphy, *Three Mugs*

Steven Roberts grew up in Helena, Montana. He studied painting at the School of the Art Institute of Chicago and ceramics at the Kansas City Art Institute and in the Program In



Steven Roberts, *Pink Teapot*

Artisnary at the University of Massachusetts—Dartmouth. He has taught at many universities around the country and has been a resident artist at the Jingdezhen Sanbao Ceramic Art Institute in China, and Watershed Center for the Ceramic Arts in Maine. Roberts makes elegant thrown and altered porcelain soda-fired pots.



2009–2010 residents

Left to right: Steven Roberts, Steven Young Lee, Kevin Snipes, Kelly Garrett Rathbone, Gwendolyn Yoppolo, Nathan Craven, Cheri Thornton, Martha Grover, Birdie Boone, Sean Erwin, Aaron Benson
Not pictured: Courtney Murphy and Kensuke Yamada

the bray at nceca 2009

The Bray's exhibition *Residents and Visiting Artists at the Archie Bray in 2008* was hosted at monOrchid gallery in Phoenix, Arizona during the 2009 NCECA conference in April. The opening reception was a great success and hundreds of ceramic enthusiasts viewed the exhibition during the conference.



used kickwheels for sale at the clay business

Used Lockerbie, Brent and Soldner kickwheels for sale at the Bray Clay Business. Call 800/443-6434 or 406/442-2521 for more information, pricing and shipping costs. Wheels can be shipped anywhere in Montana for \$75.00.



Lockerbie kickwheel



Bill Shupe and Gary Anderson volunteering at the 2009 Brickyard Bash

joinarchiebraytoday

The Bray is proud to have members from all over the world—artists, collectors, students, appreciators. We want you to be a part of this great group of people who make the Bray such a fine place.

How Your Gift Supports the Bray

☐ Friends of the Bray (\$1,000 and above)

- \$12,200-Supports a resident for one year: studio expenses, communal materials, and fellowship stipend
- \$7,200-Annual studio expenses for one long-term resident
- \$4,000-Utilities for one month
- \$3,500-Gallery supplies for one year
- \$3,000-Sponsorship of one visiting artist
- \$2,000-Annual computer expenses
- \$1,800-Annual studio expenses for one summer resident
- \$1,100-Insurance for one month

☐ Benefactor (\$500 – 999)

- \$730-Freight expenses for one week
- \$600-Studio expenses for one resident for one month
- \$500-Annual community class supplies

☐ Patron (\$250 – 499)

- \$454-Telephone expenses for two weeks
- \$335-Postage and delivery expenses for two weeks
- \$250-Communal glaze and ceramic supplies for one month

☐ Sponsor (\$100 – 249)

- \$200-Stipend for one resident for one month
- \$150-Studio expenses for one resident for one week
- \$100-Stipend for one resident for two weeks

☐ Member (\$35 – 99)

- \$80-Advertising expenses for five days
- \$60-Studio expenses for one resident for three days
- \$35-One subscription for newsletter and exhibition invitations

Name and contact information as you wish it to appear in membership listing:

Name _____

Address _____

City _____

State _____ Zip _____

Phone _____

E-mail _____

Enclose check or money order payable to the **Archie Bray Foundation, 2915 Country Club Ave, Helena, MT 59602**

Please charge: Visa MasterCard AMEX

Cardholder's name _____

Account # _____

Exp. date _____ Amount charged _____

Thank you for your support.

Tax ID# 81-0284022

2009brayannualfund

Each year during the Bray Annual Campaign we come together from around the world in support of the Archie Bray Foundation. This is a special time for the Bray community when we are reminded that the Bray's success continues, as it has for nearly sixty years, to flow directly from the commitment and hard work of the resident artists.

One resident's journey...

When David Peters arrived at the Bray directly from undergraduate school he brought a nascent idea for the direction of his work along with a nagging doubt about whether he was "good enough for the Bray."

Drawn to the aesthetic processes and materials used to make historic Korean and Japanese pots, he continued to search for his own voice. When David learned of the local Montana clays used to make Bray brick 100 years ago, he was inspired to explore them. Soon he was searching clay and feldspar deposits throughout the state.



David Peters digging clay

But connecting his art to this place was an arduous task—digging the clay, drying it outside, breaking it up and running it through first a hammer mill and then a ball mill in his studio—all before actually mixing it into a workable clay body to make his pots. Add to that a 48-hour wood firing in the train kiln and you have a labor-intensive experiment with materials.

"You get more than you ever imagined."

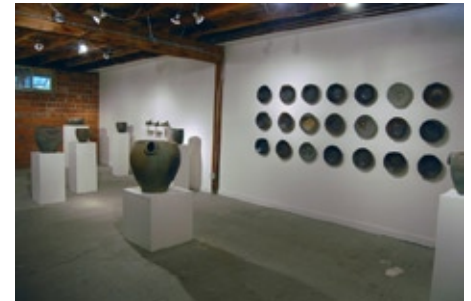
At the same time, David was working at the Bray in a community of ceramic artists



David Peters, *Large Crucible*, 2009

with styles and philosophies very different from his. "Being around people working with completely different ideas helped me formulate and

clarify my own perspective," he said. "I learned to communicate my ideas to people who think differently."



David Peters, 2008–2009 Matsutani Fellowship Exhibition

After two years at the Bray, David heads to graduate school with confidence in himself as well as a commitment to connect his work to land and place. As for his Bray experience, "I didn't expect how intense it would be. The Bray is a place where all things are tested, refined and distilled. But if you focus, you get more than you ever imagined."



committed to maintaining "a fine place to work"

Our commitment is to provide for every resident artist "a fine place to work"—an atmosphere that is at once challenging and nurturing, serious and joyful, collegial and circumspect. Spacious, well equipped, rent-free studios and comprehensive, efficient kiln facilities provide a productive work environment that is the foundation of that Bray experience.

The 2009 Archie Bray Annual Campaign goal of \$70,000 will provide the annual insurance, maintenance, and utilities for all ten long-term resident studios, helping to support their research and creative discovery. By now you should have received a letter asking for your support. If you haven't yet made your gift, please take a moment now to send your gift and renew your commitment to the creative community that is the Bray.

You can make your annual gift easily and securely online at www.archiebray.org, by calling 406/443-3502, ext. 17, or by sending a check to Archie Bray Foundation, 2915 Country Club Ave, Helena, Montana 59602. Thank you for your generosity and friendship.



thankyouvolunteers!

With all the exciting happenings at the Bray, we could not get it all done without our dedicated volunteers. Thank you to everyone who donated their time and talents to keep the Bray the way it is. We hope we haven't missed anyone and are so thankful for your help. **Thank you! Thank you! Thank you!**

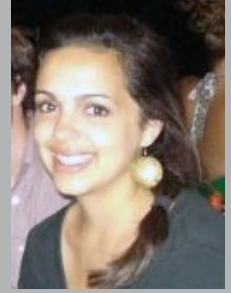
Daniela Abel	Donnie Keeton
Elizabeth Allen	Page Kelly
Gary Anderson	Ryan Kettle
Joan Anderson	Stephanie Knisley
Tim Ballweber	Melody Kromer
Shaunna Berglund	Carmen Kurushima
Mary Blake	Mary Leffers
John Board	Neal Livezey
Shawna Broderick	Brian Magee
Bill Brown	Melissa Mencini
Jan Brown	Luke Michelson
Susan Brunner	Aaron Nelson
Liz Burritt	Richard Notkin
Jim Caravello	Zach Owen
Mike Casey	Mary Ann Parvinen
Karla Cook	Jan Paustian
Kelly Darcourt	Carla Potter
Nick Darcourt	Jeanette Rakowski
Cindy Deck	Wilbur Rehmann
Ariel Earnhardt	Lori Satterfield
Gregg Edelen	Donnie Sexton
Laurie Ekanger	Ann Shaner
Lisa Ernst	Cassie Shaver
Jennifer Forker	Bill Shupe
Bobby Free	Mark Squires
Alfonso Gerbolini	Tim Stepp
Celinda Hicks	Al Swanson
Paul Hicks	Judy Thompson
Sarah Jaeger	Matt Wilson
Joe Kansier	Ron Wilson
Joanne Kaucher	



Residents in costume, 2009 Brickyard Bash

volunteerhighlight ariel^{earnhardt}

"The Bray is one of the most peaceful, scenic, and inspiring places in Helena. The staff is one of the best groups of people you can ever hope to meet. Volunteering at the Bray is an experience I will never forget. It was and still is a home away from home for me.



I strongly encourage anyone who has an appreciation for the arts to volunteer their time with these amazing people!"

During the summer of 2009 the Gallery program expanded with the help of a very special volunteer, Ariel Earnhardt. Ariel volunteered for the Archie Bray through her high school Young Adult Service Corps, an AmeriCorps program for young people.

Throughout the 10 months that Ariel volunteered at the Bray, she became familiar with daily operations, filled and arranged artists' displays, completed sales transactions and was always helpful with exhibition installation and take down.

At the end of her commitment to volunteer, she accepted a part-time job for the summer. During that time she poured her energy into photographing artwork, gathering information and launching the Online Sales Gallery.

The relationship we built with Ariel not only resulted in a life-long friend and a great Online Sales Gallery, but Ariel became a key part of the Bray family. She left the Bray to pursue her artistic dreams at the Seattle Art Institute with a scholarship to assist her. Thank you Ariel and everyone who volunteers at the Bray. We couldn't do it without you.

father'sdayatthebray

This year on Father's Day many people enjoyed a picnic lunch on the lawn surrounded by the historic brickyard, ceramic sculptures and live jazz by the Wilbur Rehmann Quintet. Stay tuned for *Jazz on the Lawn*, Father's Day 2010. Sponsored in part by the Montana Arts Council.



Jazz on the Lawn with the Wilbur Rehmann Quintet,
Father's Day 2009



archiebrayfoundation for the ceramic arts
 2915 Country Club Avenue
 Helena, MT 59602

Non-Profit
 Organization
 U.S. Postage
PAID
 Permit #44
 Helena, MT
 59601

Address Service Requested

The Archie Bray is supported by the Montana Arts Council, a state agency funded by the State of Montana and the National Endowment for the Arts.



Partial funding for this project was provided by the Montana Cultural Trust.

Printed on Recycled Paper



archiebrayholidayexhibitionandsale



The holidays are just around the corner and artists are in a festive and creative spirit. Artwork is already arriving for the annual Holiday Exhibition and Sale and a new selection of work will be featured on our Online Sales Gallery. The North Gallery will be overflowing with work by current residents, as well as some of your favorite past residents.

Join us for a fun and memorable opening reception, Thursday, November 19th from 6–8 pm, the week before Thanksgiving. The gallery will be open through Wednesday, December 23rd, and will have wonderful gifts for anyone on your list.

If you cannot join us in person, the Online Sales Gallery will allow you get in on the action with shipping available to anywhere in the US. Go to www.archiebray.org and shop today. Make this year's holiday special with a handmade cup and a Bray t-shirt for all your friends and family.

For more information, contact Gallery Director, Emily Free Wilson at 406/443-3502, ext. 18, or emily@archiebray.org

Create | Collect | Connect

North Gallery • **November 19–December 23** • Opening Reception: Thursday, November 19, 6–8pm
 braygalleryhours • monday–saturday 10am–5pm • sunday 1pm–5pm

Holiday image by Birdie Boone

giftcertificatesavailableonline

The perfect gift for any clay enthusiast! Gift certificates are available to purchase online and can be sent anywhere in the world. Gift certificates may be used for gallery purchases, workshops or classes. (Sorry, not valid for Clay Business) Certificates can be redeemed in person or over the phone.

Go to www.archiebray.org and click on the Sales Gallery link to purchase today.



archiebraywishlist

The Bray is in need of a few items. Let us know if you have something to donate, or would be interested in donating funds to be used to purchase these items. If you can help, contact Steve at 406/443-3502 ext. 12.

- Push brooms and dust pans
- Hot pot for heating water
- Empty 5 gallon buckets with lids
- Packing boxes, newspaper, bubble wrap, plastic grocery bags for the Clay Business
- 8'-10' Fiberglass ladder (\$100)
- Pyrometer (\$265)
- Stationary belt sander (\$500-\$700)

